

RAGAS DENTAL COLLEGE

Dept of Oral and Maxillofacial pathology

PRE-CANCER AND CANCER

4th October 2022 – 23rd December 2022

For registration: Contact Ragas dental college office; Phone: 044 - 24530002

COURSE CODE: SRCC2022/04

DURATION: 30 HOURS

Intended audience:

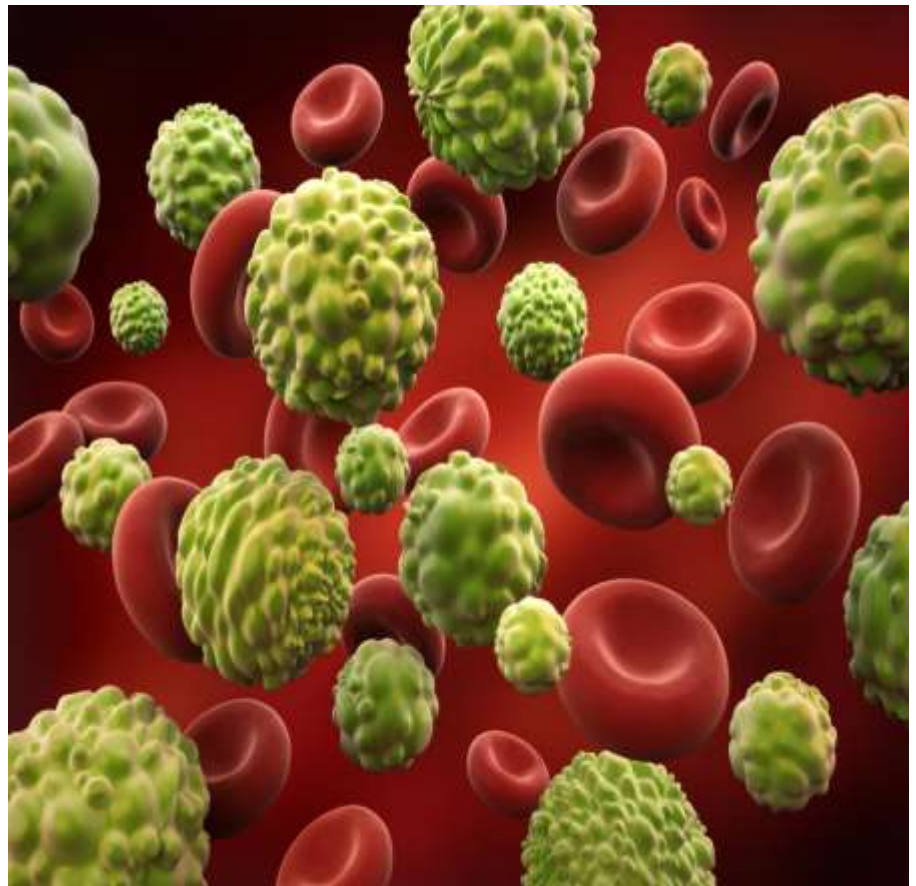
III BDS, IV BDS, Interns, PGs
of All Departments

Course Coordinators:

Dr.Ranganathan, Dr.Umadevi,
Dr.Elizabeth, Dr.Rooban

Faculty:

All Staff members of
Department of Oral Pathology



Course Outline:

This course gives a better understanding for students to approach all Oral precancer and cancer lesions. It's necessary to identify the nature of the lesion, both systemic or local illness. The elaborative knowledge of treatment therapy and prognosis of these lesions will help in further research development. This programme also gives a complete outline about newer molecular techniques and further research on it.

Course Plan:

Week 1:	Introduction, Burden of disease Risk Factors and Etiopathogenesis of OPMDs and OSCC Microbiology of OPMDs and OSCC
Week 2:	White and Red Lesions Clinical features of OPMDs Clinical features of OSCC
Week 3:	Histopathology of OPMDs – Grading Histopathology of OSCC – Grading and Staging Clinico-pathological correlation
Week 4:	Introduction to Diagnostic approaches of OPMDs and OSCC
Week 5:	Chair side adjunctive techniques/ Optical imaging techniques
Week 6:	Biopsy Techniques
Week 7:	Microbiology of oral cancer (16sRNA sequencing)
Week 8:	Immunohistochemistry in Cancer
Week 9:	PCR
Week 10:	Tissue Culture
Week 11:	Tobacco Control Programme at the Tobacco Cessation Clinic
Week 12:	Treatment, Prevention and Prognosis

Final Assessment: Weekly – Assignment; Monthly- viva voce; End term: MCQ exam